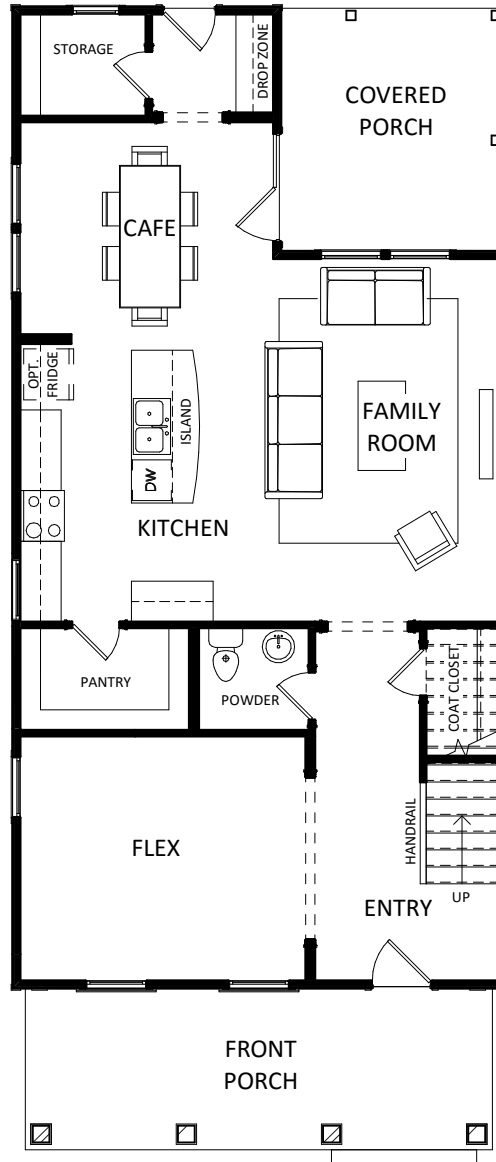




PHONE 843.830.0158

- HAYWARD -

2,135 sq. ft.
3-4 bedrooms • 2.5-3 baths
First Floor



SUMMERS CORNER™

SUMMERVILLE, SC

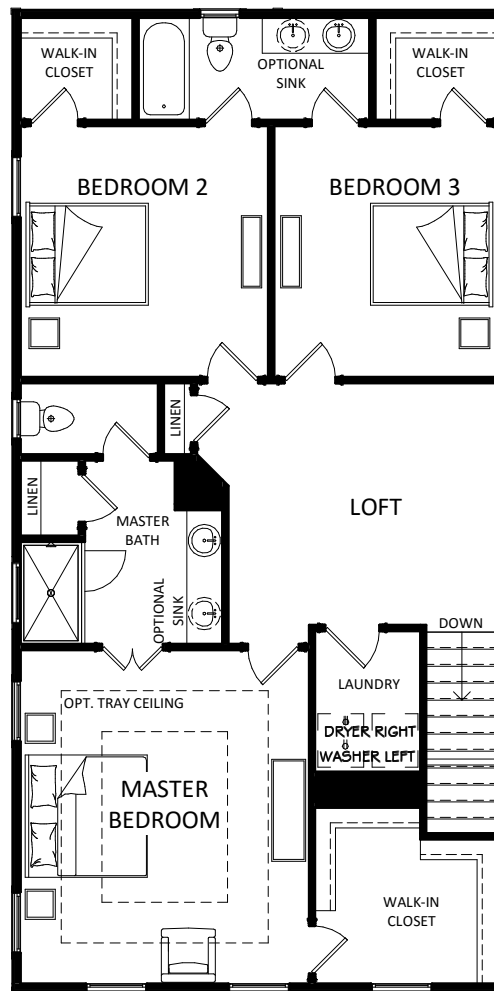


PHONE 843.830.0158

- HAYWARD -

//

2,135 sq. ft.
3-4 bedrooms • 2.5-3 baths
Second Floor



SUMMERS CORNER™

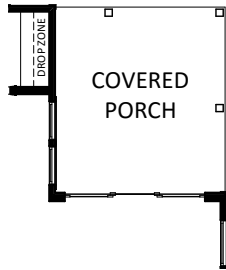
SUMMERVILLE, SC



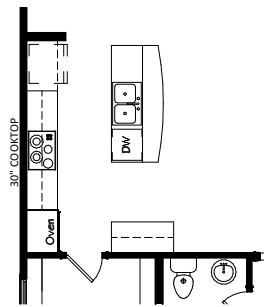
PHONE 843.830.0158

- HAYWARD -

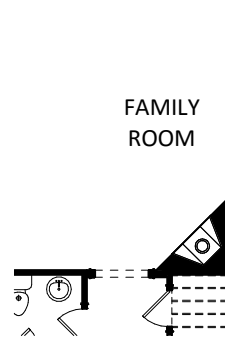
2,135 sq. ft.
3-4 bedrooms • 2.5-3 baths
First Floor Options



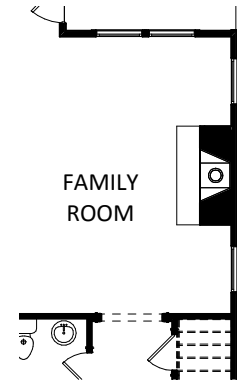
Optional
9' Slider Door



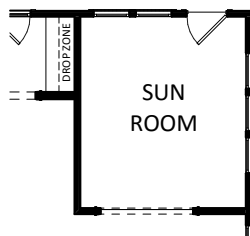
Optional
Chef's Kitchen



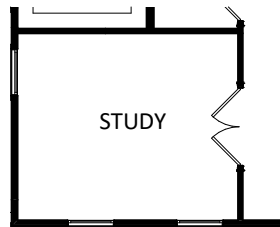
Optional
Corner Fireplace



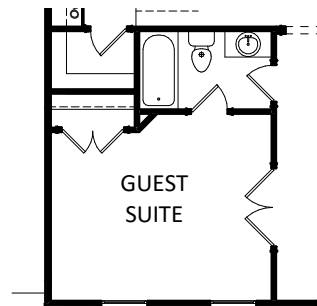
Optional
Fireplace



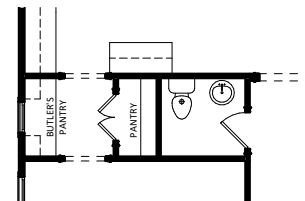
Optional
Sun Room



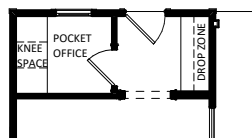
Optional
Study



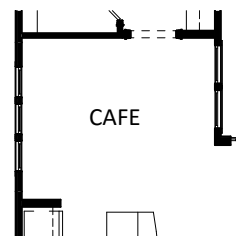
Optional
Guest Suite



Optional
Butler's Pantry



Optional
Pocket Office



Optional
Cafe Clerestory

SUMMERS CORNER™

SUMMERVILLE, SC

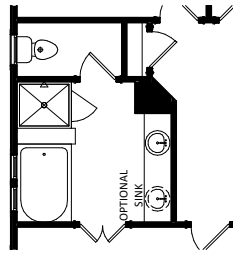


PHONE 843.830.0158

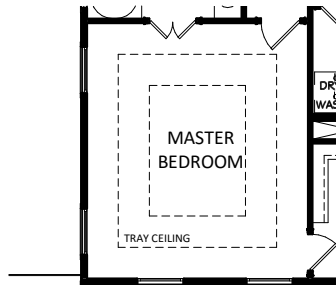
- HAYWARD -

//

2,135 sq. ft.
3-4 bedrooms • 2.5-3 baths
Second Floor Options



Optional
Master Bath



Optional
Master Tray Ceiling



Optional
Loft Clerestory

SUMMERS CORNER™

SUMMERVILLE, SC



PHONE 843.830.0158

- HAYWARD -

//

2,135 sq. ft.
3-4 bedrooms • 2.5-3 baths



SUMMERS CORNER™
SUMMERVILLE, SC

Floorplans and elevations are artist's renderings and may contain options, which are not standard on all models. Sabal Homes reserves the right to make changes to these floorplans, specifications, dimensions and elevations without prior notice. Stated dimensions and square footage are approximate and should not be used as representation of the home's precise or actual size. Copyright ©2016 12/2016