



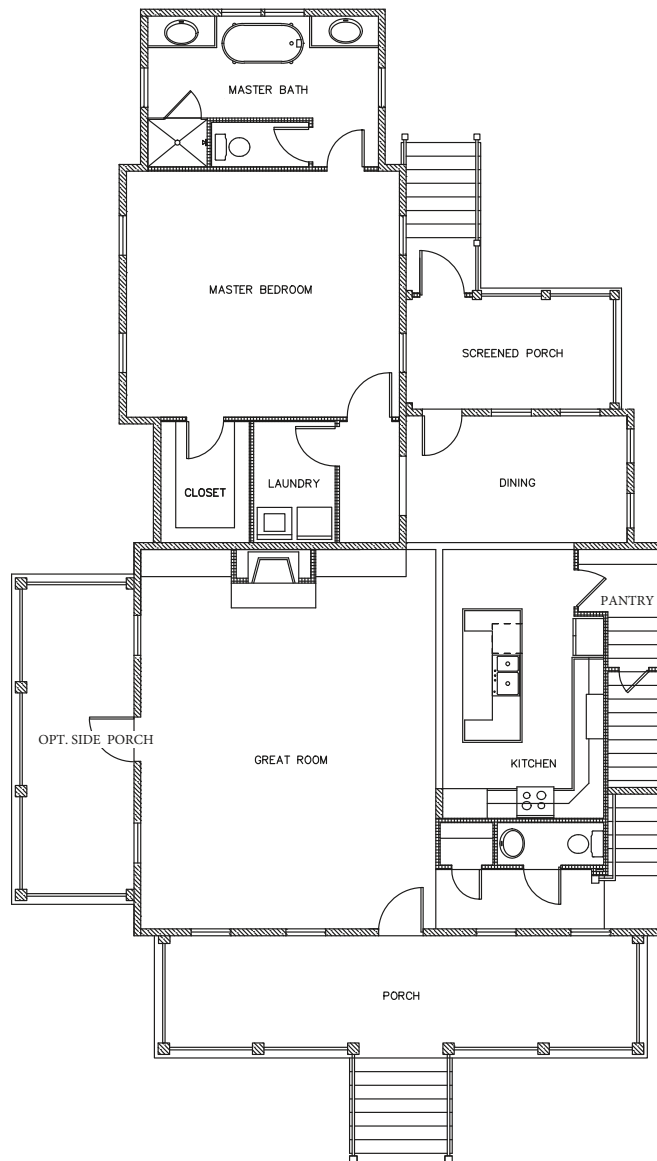
FRONTDOOR  
COMMUNITIES

PHONE 843.352.4992

## - LEYLAND -

#1

2,593 sq. ft.  
4 bedrooms • 3.5 baths  
First Floor



## SUMMERS CORNER™

SUMMERVILLE, SC

Floorplans and elevations are artist's renderings and may contain options, which are not standard on all models. FrontDoor Communities reserves the right to make changes to these floorplans, specifications, dimensions and elevations without prior notice. Stated dimensions and square footage are approximate and should not be used as representation of the home's precise or actual size. Copyright ©2016 10/2016



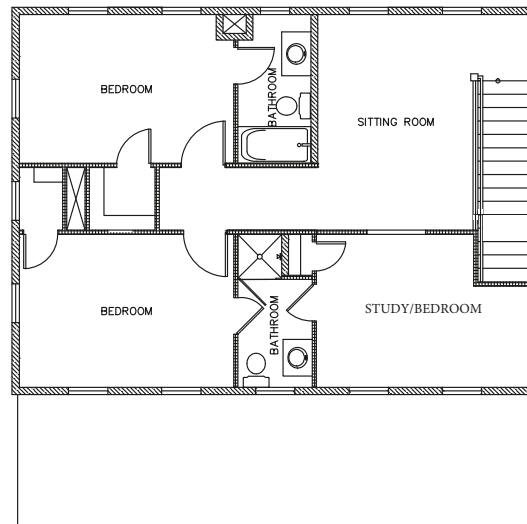
**FRONTDOOR**  
COMMUNITIES

PHONE 843.352.4992

## - LEYLAND -

//

2,593 sq. ft.  
4 bedrooms • 3.5 baths  
First Floor



**SUMMERS CORNER™**  
SUMMERVILLE, SC



PHONE 843.352.4992

## - LEYLAND -

//

2,593 sq. ft.  
4 bedrooms • 3.5 baths  
First Floor



## SUMMERS CORNER™

SUMMERVILLE, SC

Floorplans and elevations are artist's renderings and may contain options, which are not standard on all models. FrontDoor Communities reserves the right to make changes to these floorplans, specifications, dimensions and elevations without prior notice. Stated dimensions and square footage are approximate and should not be used as representation of the home's precise or actual size. Copyright ©2016 10/2016