

- GARDEN -
PORTFOLIO

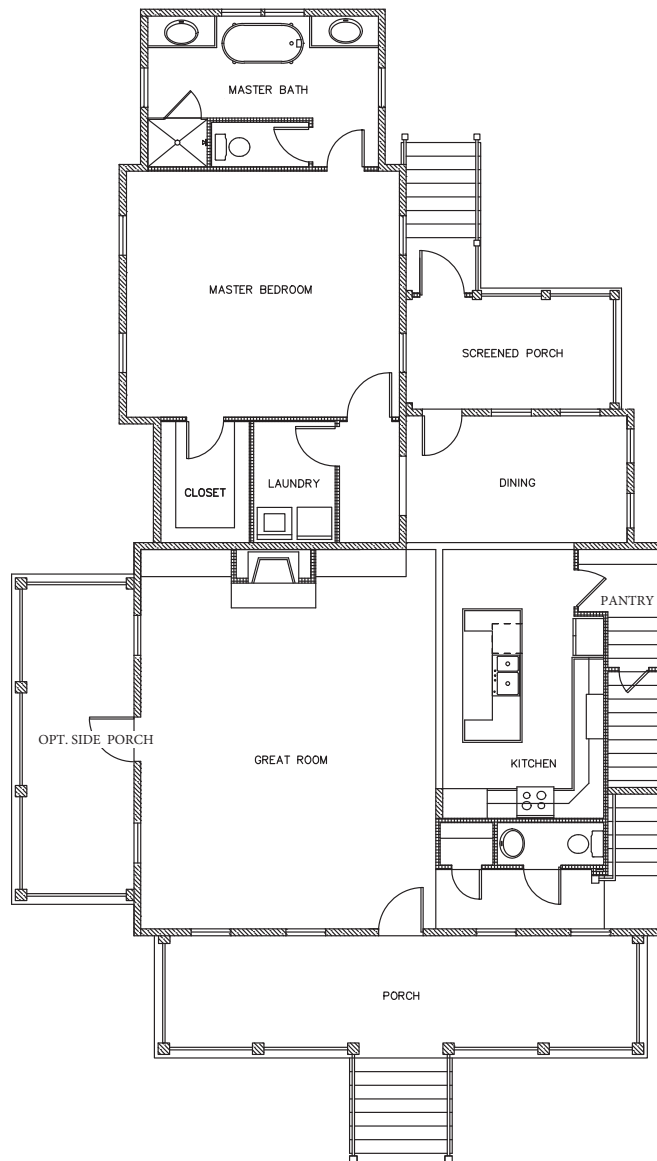


FRONTDOOR
COMMUNITIES

PHONE. 843.352.4992

-LEYLAND-

2,593 sq. ft.
4 bedrooms • 3.5 baths
First Floor



SUMMERS CORNER™
SUMMERVILLE, SC

Floorplans and elevations are artist's renderings and may contain options, which are not standard on all models. FrontDoor Communities reserves the right to make changes to these floorplans, specifications, dimensions and elevations without prior notice. Stated dimensions and square footage are approximate and should not be used as representation of the home's precise or actual size. Copyright ©2016 6/2016

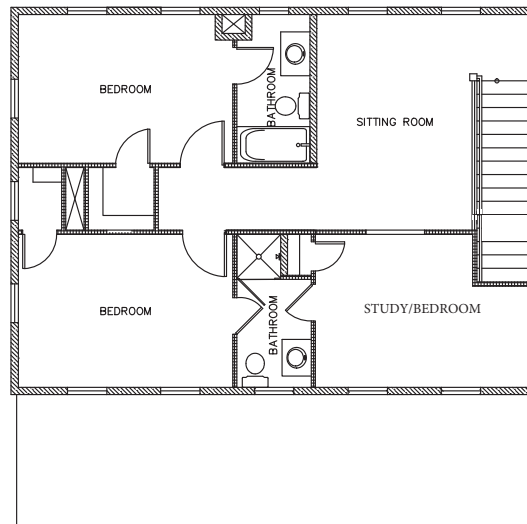
#1
- GARDEN -
PORTFOLIO



PHONE. 843.352.4992

-LEYLAND-

2,593 sq. ft.
4 bedrooms • 3.5 baths
Second Floor



SUMMERS CORNER™
SUMMERVILLE, SC

— // —
- GARDEN -
PORTFOLIO
/ —



FRONTDOOR
COMMUNITIES

PHONE. 843.352.4992

-LEYLAND-

2,593 sq. ft.
4 bedrooms • 3.5 baths



SUMMERS CORNER™
SUMMERVILLE, SC

Floorplans and elevations are artist's renderings and may contain options, which are not standard on all models. FrontDoor Communities reserves the right to make changes to these floorplans, specifications, dimensions and elevations without prior notice. Stated dimensions and square footage are approximate and should not be used as representation of the home's precise or actual size. Copyright ©2016 6/2016 